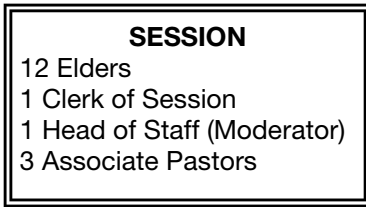


HOW IS OUR CHURCH GOVERNED?

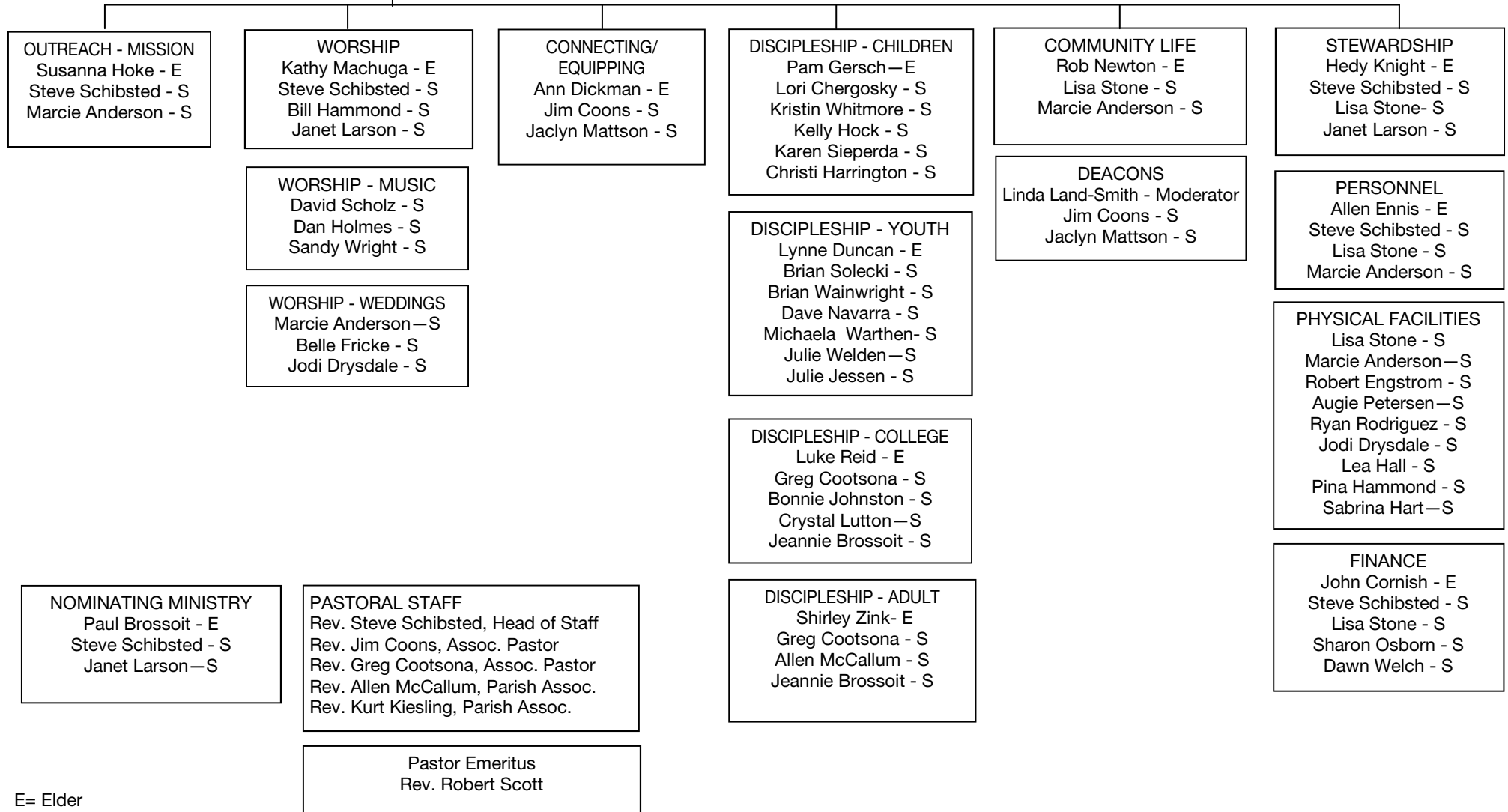
AN ORGANIZATIONAL OVERVIEW OF BIDWELL PRESBYTERIAN CHURCH



Bidwell Presbyterian Church

Bidwell Presbyterian Church, like all Presbyterian Churches, is governed by “elders” elected by the congregation for a 3 year term of service. The elders are assisted in their work by paid professional “staff”. Each elder leads one of the ministries and works along with designated members of the congregation-at-large. These ministries meet as often as necessary to carry out their mission. Once per month, the elders and pastoral staff meet together as a “Session” to pray, share news, coordinate their various ministries, and vote on business that requires formal approval.

PURPOSE MINISTRIES



E= Elder
S = Staff